

RISK INSPECCION

Identification of hazards and risk assessment approaches, identifying major hazards in general safety data bases on International standards (OSHA, NFPA, API, etc).

Examining risk control techniques and evaluation of protective systems.
Providing property loss control services for insurers, carriers, brokers, insurance companies and adjusters.
Consulting engineering in the areas of machinery, equipment and construction regarding products liability and property loss issues.

The risk-based inspections conducted by Techsux Consulting, establishes the characterization of the levels of mechanical, physical, and structural integrity of the analyzed systems based on rigorous inspection.

Determination of hazards and risk exposition
Estimation of potential economic loss, risk to human and environmental impact
Estimation of failures of equipment or fire due catastrophic events, such as: Earthquake, storm, hurricane, volcanoes, tsunami, lightning or flood.
Estimation of physical, mechanical and structural integrity
Detailed risk inspection report.



“Highly specialized studies base on own risk inspection methodology”



TECHSUX CONSULTING



244 Fifth Avenue, Suite 2428
New York, NY 10001

P 917-297-1389
F 212-252-4292
E yperez@techsux.com

www.techsux.com

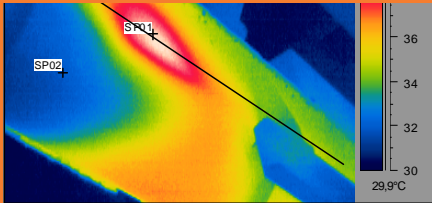
TECHSUX CONSULTING

Risk Assessment for insurance purpose

TECHSUX CONSULTING INC



Risk Inspections



Techsux Consulting, Inc. offers complete engineering inspection, analysis and evaluation of hazards and risk expositions in insured facilities.

Our services include:

- Risk Inspection
- Thermography
- Machinery Breakdown
- Fire Inspection
- NDT (Non destructive Testing)

Thermography.

- Inspection and analysis of electrical, mechanical, hydraulic and pneumatic equipment operation.
- Inspection of electric substations, lines, connections, insulators, derivations, switches, collector-bars, condensers and transformers.
- Detection of imbalance in electric phases, loss or increase of resistance in electric connections and defective commutators.
- Inspection of electric engines, high temperature in bearings, coil flaws, collector-ring and brush.
- Inspection of drying furnaces, calcinations furnaces, thermal treatment furnaces, combustion pattern of burners, heat distribution in furnaces, evaluation of refractory.

Fire inspections.

- Design and evaluation of emergency procedures, including fire.
- Chemical spilling, natural gas release, asbestos, and emergency preparedness.
- Recognition of potential hazards associated to hazardous materials.
- Providing fire PREVENTION AND protection engineering services for industries.
- Preparation of fire hazards analysis, equipment testing, hydraulic analysis.

NDT (Non Destructive Testing).

- Ultrasound detection of faults.
- Detection of slight faults through magnetic particules.
- Ultrasonic thickness measurement.
- Dimensional metrology.

Breakdown Machinery

- Evaluation of rotating machinery vibration.
- Evaluation of reciprocating machinery vibration.
- Evaluation of rigid structure vibration and resonance.
- Vibration analysis using spectra and overall values.
- Vibration Diagnostics using phase analysis.

